

Eternal Way of Truth  
Part Two  
Cycle of Life  
Exoteric and Esoteric Text

1 The Buddhist wheel of dharma symbolises the universal law. This key to liberation shows the dynamic balancing of the 3-fold spiral, positive, negative, and equilibrium.

Out of the centre point expands the three-fold conditions of nature. From there are the eight-fold steps to liberation. The spiral of the eight stages transcends the cyclic aspect of time.



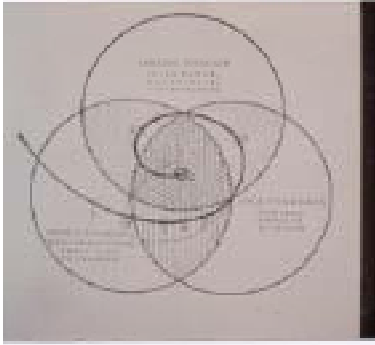
2 This painting by Eikei Kano hangs in the Imperial Palace in Kyoto, Japan. The human soul to the Japanese is three interlocking spirals.

The soul or beingness is the source of the three conditions of nature which cycle endlessly.



3 A drawing of the same tripartite aspects of life uniting in an equilibrium in the centre.

A human sees the three conditions of nature; *tamas*, *rajas* and *sattvas*, if balanced, as uniting to form the soul. One who has experienced oneself as an individual however, sees the three *gunas* as expanding out of the source of beingness or soul or seed of creation.



4 Lama Govinda has summarised the 8-fold path to samadhi as being a balance of will, sensuality and wisdom, the 3 aspects of life.

The eight steps or spokes can be shown as a spiral of evolution in a three-fold setting.



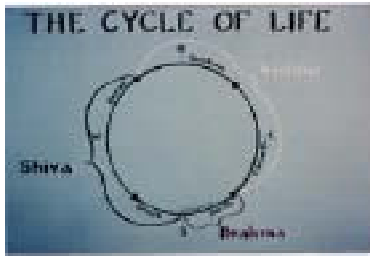
5 The yin-yang symbol is itself the third principle, that of equilibrium, formed by the dynamic balance of the opposing two-fold principle. It is surrounded by the eight trigrams, like the eight spokes of the dharma wheel.

The eight trigrams are the eight changes that the cycle of nature goes through. The yin-yang (female/male) monad can cycle endlessly unless the golden door can be found by Grace.



6 Here Carl Jung shows the dynamic cycling of life from thought to intuition to sensation to feeling.

An analysis of the nature of the cycle of life leads to success through its application on the pravrtti marga (worldly path; wilful path; path with desires).



7 The cycle of life starts at conception from Brahma's perfect form to birth, fades into Vishnu's realm of growth to the sustaining of life. As time accumulates, the purifying effort of decay sets in, supervised by Shiva, until death carries us into the blackness of nonexistence.

The red of passion, rajas leads to conception by the seed of creation, Brahma. Vishnu is the netter or function of god that grows and sustains. Shiva is the auspicious dissolver that leads to the catastrophe of death.



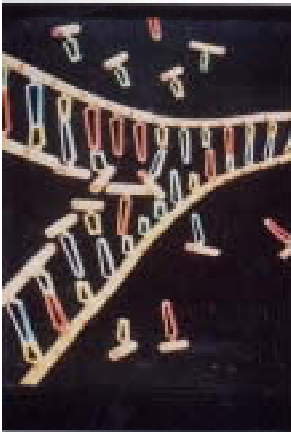
8 Brahma is the origin of creation. From his eternal form flows all forms, creatures and knowledge. Brahma's form is like a template which stamps out copies or duplicates.

The seed of creation is the template of all form. It is the source of Self or ego, the original being, the desire to duplicate itself.



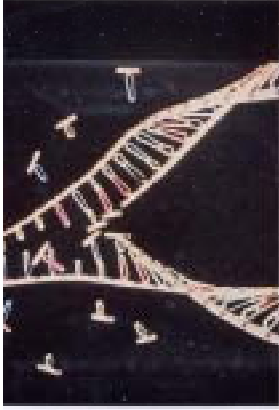
9 The Egyptian equivalent of Brahma is Ptah, shown here on the left. From the earth, Ptah using his staff, formed all creatures in his own image and breathed life into them.

The neter Ptah holds the staff of life, the phallus, which pours forth the anka or prana, making the creature, man, move. The seed of creation is the form of God, or in other terms the subtle body. God's form is not a creation itself, it is simply God's form which is God Itself.



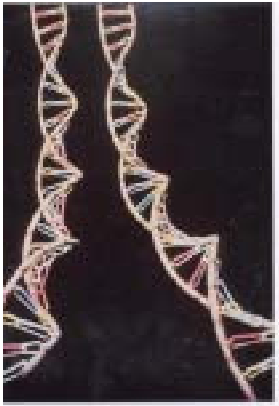
10 The DNA molecule is based on the divine form. Here the DNA is unzipping, then it gathers additional pieces from the environment.

The DNA molecule's form is directed and evolved by God's form, Ptah, Brahma.



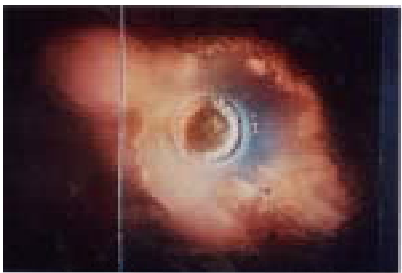
11 Thus the world is brought into order.

Thus, creatures are gradually evolving and approaching closer and closer to being in God's image.



12 And now Ptah or the creative pattern has duplicated itself. Brahma has created a creature.

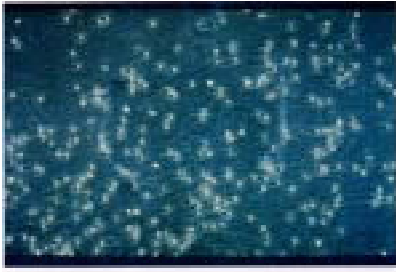
The bond that holds the two spiralling sides of the DNA together is the hydrogen bonding energy or, on a quark level, the gluon. In Sanskrit it is called Brahmani, the female creative energy (see page 238 of Divine Order).



13 One half of the DNA is encapsulated in the female egg or ovum. Note the three small round bodies to the right of the ovum. They are polar bodies.

The golden womb, the ovum contains Brahmani and is balanced by the three male polar bodies to the right. These hold the ovum in suspension until the

arrival of the sperm.



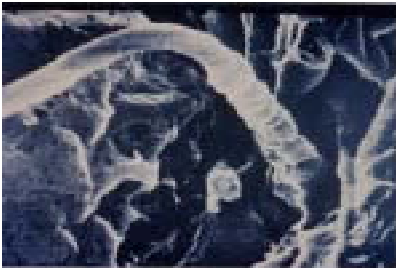
14 The other half of the DNA is contained in each of the thousands of male eggs or sperms, shown here rushing in one direction toward an ovum out of the picture on the right.

The sperm here streams in one direction seeking union or yoga with the ovum in a physical replay of the energy streaming between an individual and the Other.



15 Here is a single sperm cell with its attached whipping tail starting to penetrate an ovum.

The sperm circles the ovum several times to cancel and replace the polar bodies and make the surface of the ovum penetrable. What is the divine parallel of this



16 Fertilisation happens when the head of the sperm cell succeeds in penetrating the ovum membrane and the two halves of the DNA unite.

When the sperm has penetrated the ovum, an electric signal flashes around the membrane sealing (mudra) it from any other sperm entering. Again what is the

divine parallel?

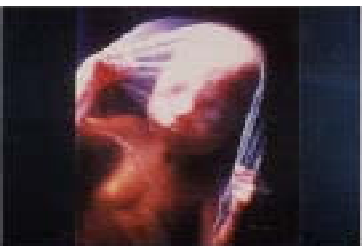


17 After 7 weeks the eye spots are visible in the inch long human embryo. The developing embryo goes through the entire evolutionary process gradually nearing the form of God.

Krishna, the causer of the spontaneous upward flow of shakti, rescues, in this case Uttara (uttara means the upper or top). Krishna evolves the brain into the human stage by causing a creature to stand upright.



18



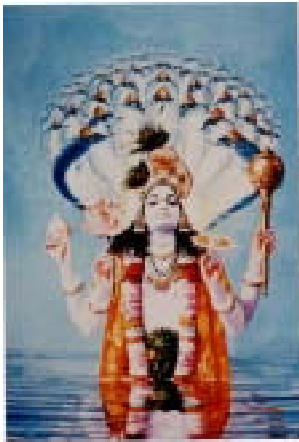
19 Still in the womb of the mother, a four-month old is more than 6 inches long.

A four-month old still forming.



20 Human birth is usually difficult, as is another kind of birth, the birth of urge for the Absolute.

At birth, on the first breath, when the prana of the individual enters the body, the evolutionary energy is overlayed by the Will in the form of Vishnu. Prana is the flow of energy between you and Other, its neter is Ra or Vishnu, the second phase of the cycle of life (see page 7).



21 Lord Vishnu, born up from the cosmic waters all the affairs of the entire universe. The two main parts of Vishnu's duty are discipline and sustenance.

Vishnu lives in the air (from the diaphragm to the eyebrows) and holds the conch in his right hand. He is protected by multiple cobras, each wearing a crown. The snake esoterically represents desire, the crown nobility; thus, Vishnu is protected by noble desires. How do all the characteristics of Vishnu contribute to the discipline and sustenance of the cycle of life?



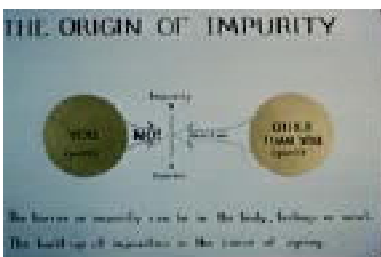
22 Surya, god of the sun, is the personification of discipline. The concentrated effulgent sun is his halo. The conch is his mantra, gayatri. His banner, the gold of God. In his other left hand is the pink lotus of creation. In his upper right hand is the discus of light, his power. Riding across the sky on his chariot, the sun god has been worshipped the world over. Using one's will to discipline oneself leads to growth and success in life.

Write your understanding of the esoteric meanings of every part of this painting of the Surya form of Visnu, covering all the course material up to this point.



23 To sustain one's success is the duty and nature of Narayana. Floating on lotus leaf Narayana sustains the world by sucking on his left big toe. Note the four stars placed vertically on the centre line of his forehead. Why is it that once success is attained it cannot be permanently kept?

Narayana: Nara was the first disciplined yogin. Narayana, the being or neter that lets discipline happen.



24 If any impurity was involved in achieving the growth or in sustaining the success, that impurity must be removed.

The removal of impurity makes the heaven of success unstable. This diagram shows the origin of impurity. If in any activity the eternally pure you at any point resists or tries to force that which is the eternally pure other than you, the refusal of that other forms an impurity, an apparent existence. The build-up of such impurities is the cause of aging, decay and death. Thus the cycle of life goes into its decline.

Do the Five Steps of Study on this diagram and text.



25 Shiva is the purifier. The trident, the crescent moon in his hair, the cobra around his neck, the earrings, conch in his left hand, the marked bands of collected prana or life energy on his arms all signify different modes of purification. His power of purification is the divine Uma. The purifier dissolves impurity.

The next netter of the cycle of life is Siva or Rudra. While the dissolver is often confused with destruction, he is that which makes possible the removal of impurity by purging and making the opportunity for entering the golden door possible; thus, he is called the Auspicious.